





“Elevate Your Lifestyle Amidst Nature’s Embrace.”



BADAL HILL
SIGNATURE VILLAS





BADAL HILLS

LOCATION MAP

A prime location that combines tranquility with convenience, making it the ideal choice for modern living.



NESTED IN DHARAMPUR

Just 60 km from **Chandigarh Mohali International Airport**, enjoy the tranquility of nature while staying connected to urban conveniences.

WELCOME

TO BADAL HILLS

SIGNATURE VILLAS

Welcome to Badal Hills Signature Villas, designed for those who seek a refined lifestyle in the lap of nature. Each villa is a sanctuary, offering stunning valley views, private gardens, and expansive living spaces. With a commitment to sustainability, Badal Hills features a 5-meter wide access road, lush green cover, and community amenities that foster a sense of belonging. The neoclassical architecture, combined with modern design elements, creates a unique living experience that is both elegant and timeless.



UNIQUENESS



Badal Hills is not just a residence; it's a lifestyle choice. The project offers luxury and exclusivity in a prime location, making it the perfect retreat for discerning homeowners. With thoughtfully designed interiors and exceptional attention to detail, each villa embodies sophistication and comfort, making it a rare gem in the real estate market.



ARCHITECTURE & DESIGN INSPIRATION

Inspired by the harmony of nature and modern elegance, the villas at Badal Hills boast a seamless blend of indoor and outdoor living. The architectural design emphasizes spaciousness and light, featuring double-height entrance lobbies, panoramic views, and signature interiors that reflect both style and functionality.

VILLA SPECIFICATIONS

"At Badal Hills, we offer a selection of meticulously designed villas to cater to your lifestyle needs."

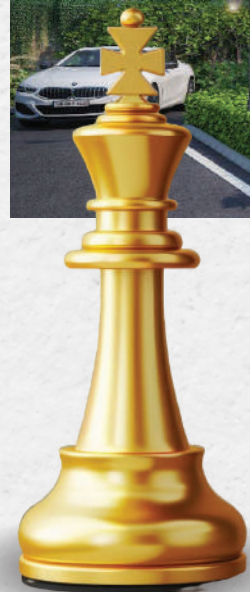


4 BHK VILLAS

- Size : 3,200 sq. ft.
- Floors : 3
- Generous space with additional guest rooms and entertainment areas.



BUILT - UP AREA DETAILS



VILLA

3

Ground Floor - 721 SqFt.
Deck/Porch Area - 169 SqFt.
First Floor - 679 SqFt.
Second Floor - 679 SqFt.
Balcony Area - 423 SqFt.
Total Area - 2078 SqFt.

VILLA

2

7

Ground Floor - 1519 SqFt.
Deck/Porch Area - 97 SqFt.
First Floor - 1515 SqFt.
Second Floor - 1538 SqFt.
Balcony Area - 663 SqFt.
Total Area - 4572 SqFt.

VILLA

1

5

4

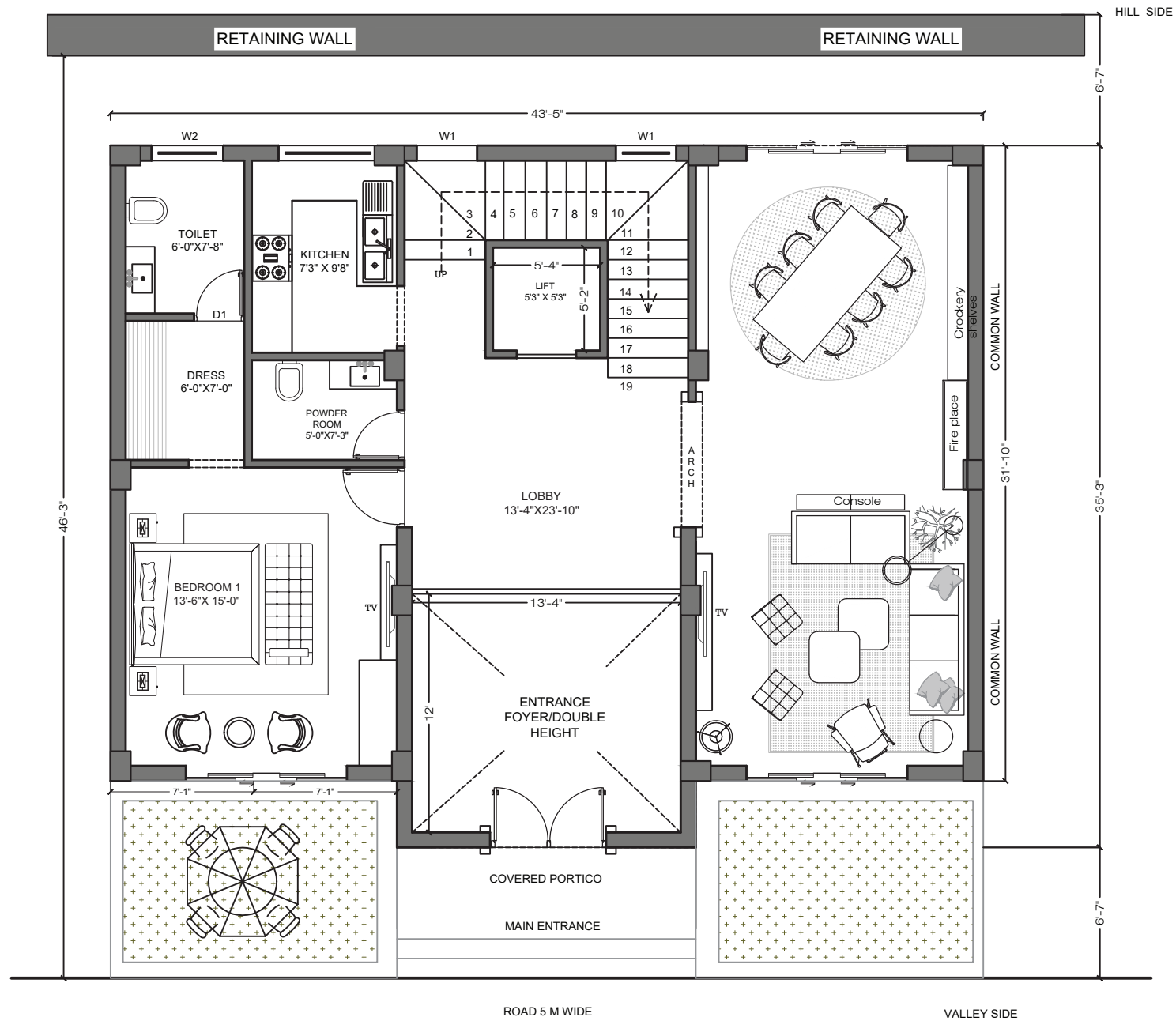
Ground Floor - 1525 SqFt.
Deck/Porch Area - 145 SqFt.
First Floor - 1470 SqFt.
Second Floor - 1519 SqFt.
Balcony Area - 689 SqFt.
Total Area - 4514 SqFt.

VILLA

6

LAYOUT PLAN

“Explore our thoughtfully crafted floor plans that emphasize spaciousness and functionality”

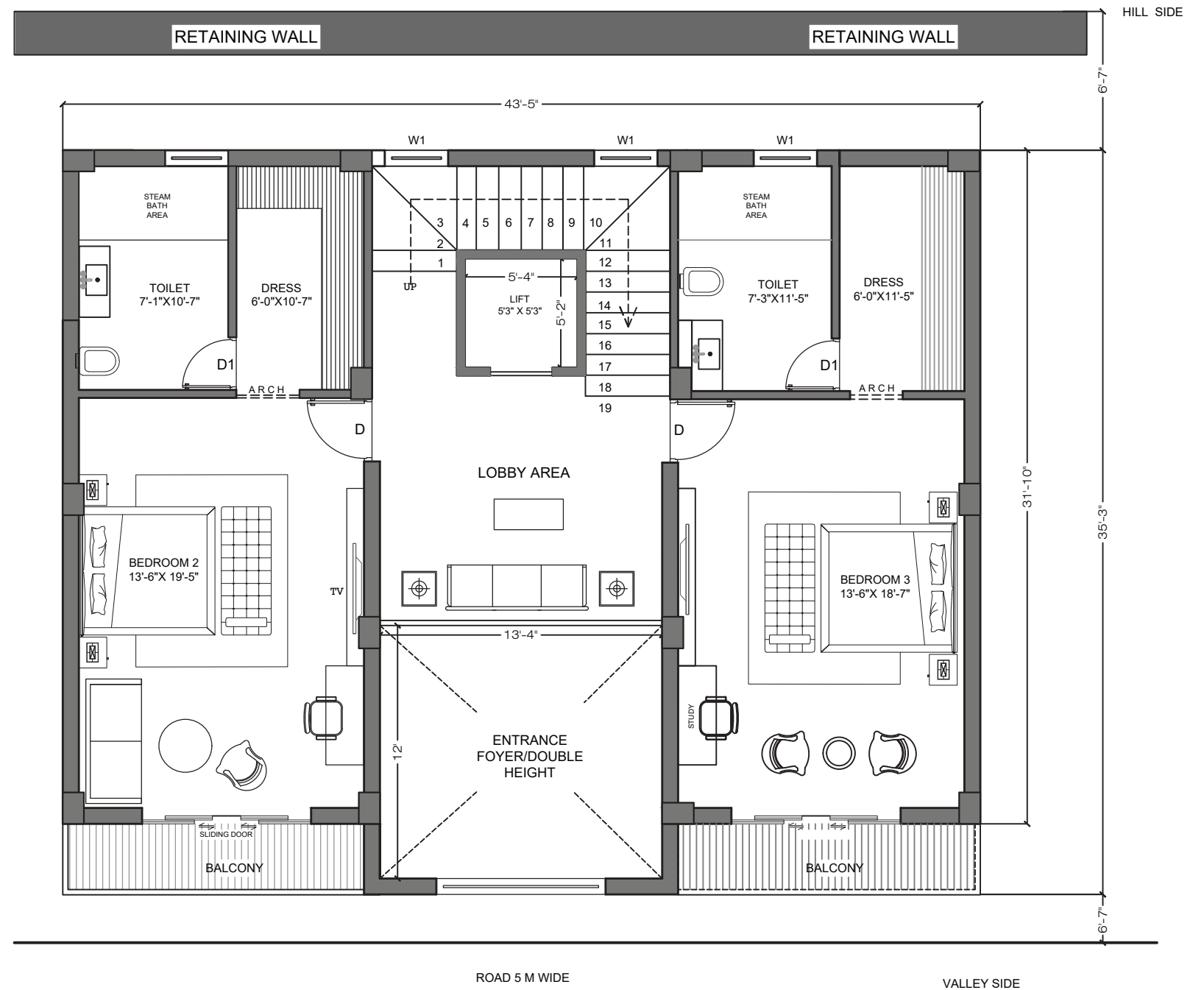


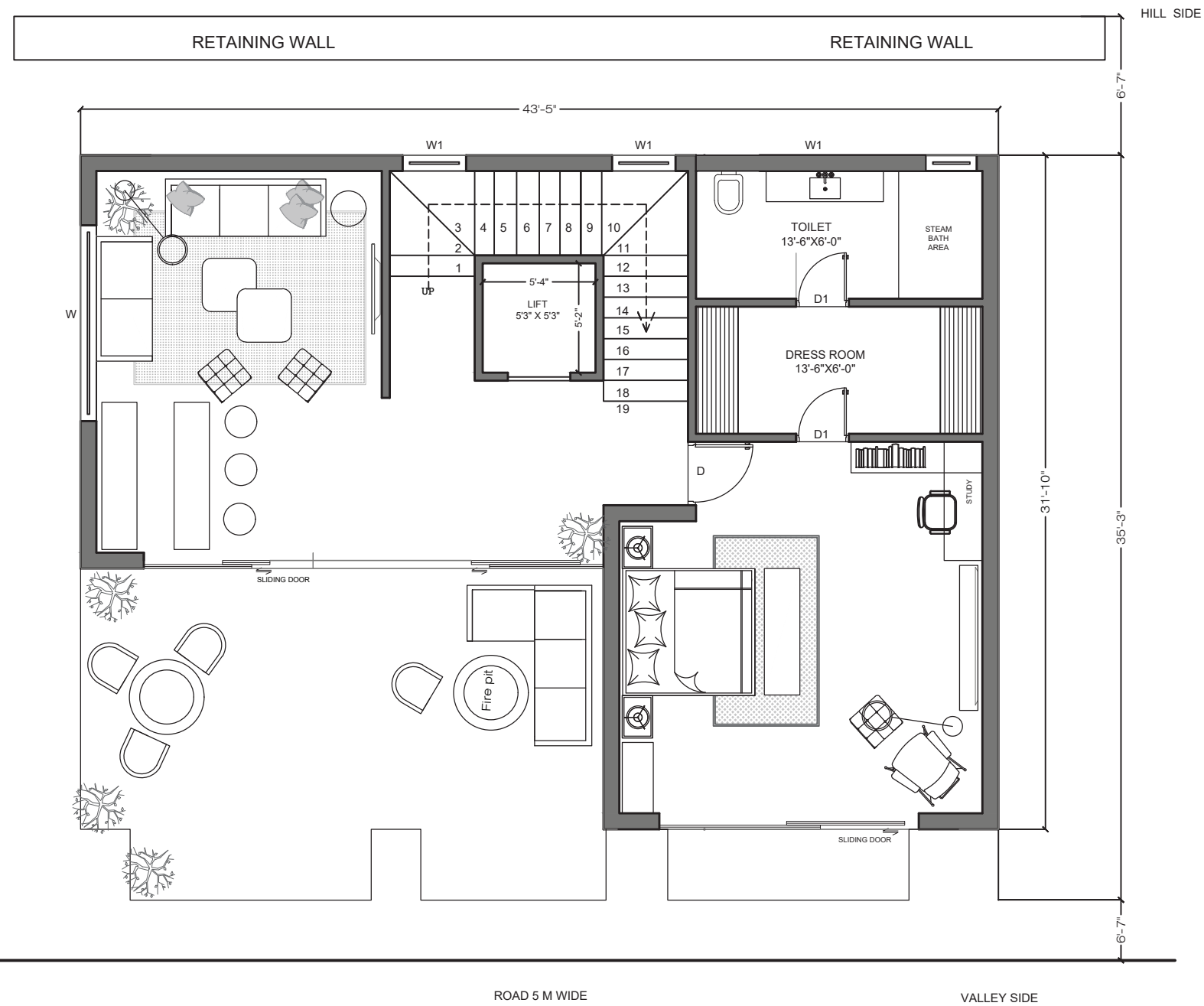
GROUND FLOOR PLAN

- Key Rooms: Double-height entrance lobby, valley-facing bedroom, lounge, modular kitchen, and front lawn.

FIRST FLOOR PLAN

- Key Rooms: Seating lounge with a view, spacious bedrooms, luxurious washrooms, and private balconies.





SECOND FLOOR PLAN

- Key Rooms: Terrace deck, covered multi-purpose hall, panoramic view area, and personalized bedroom decor.

INTERIORS

"Each villa features luxurious interiors designed for comfort and style"

BEDROOMS

Walk-in closets, carefully selected rugs, and automated light fixtures.











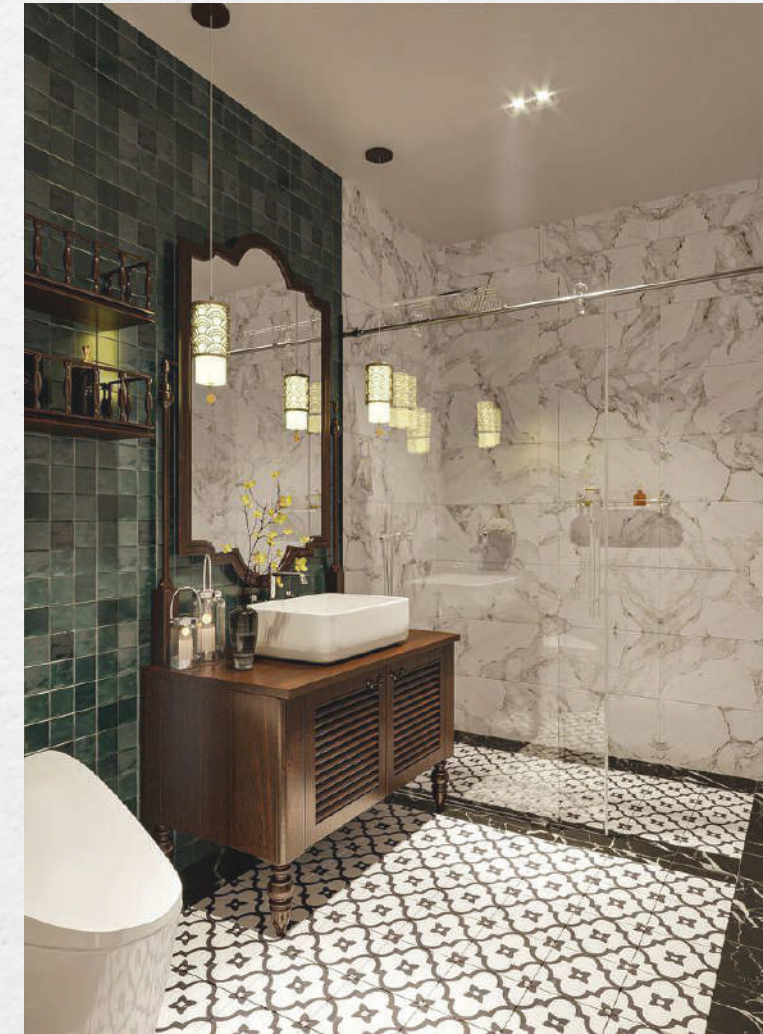






BATHROOMS

Designer floor and wall tiles, shower panels, vanity, and all premium fittings.







WALK-IN CLOSET

Sunroof lighting is a modern feature that integrates skylights into the ceiling, allowing natural light to brighten indoor spaces. In Badal hills, it adds brightness and elegance to the walk-in closet, enhancing both its luxury and functionality while creating an inviting atmosphere.

TERRACE BAR LOUNGE



MODULAR KITCHEN

The kitchens in Badal Hills villas are designed for both functionality and aesthetics



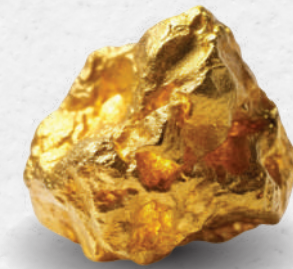
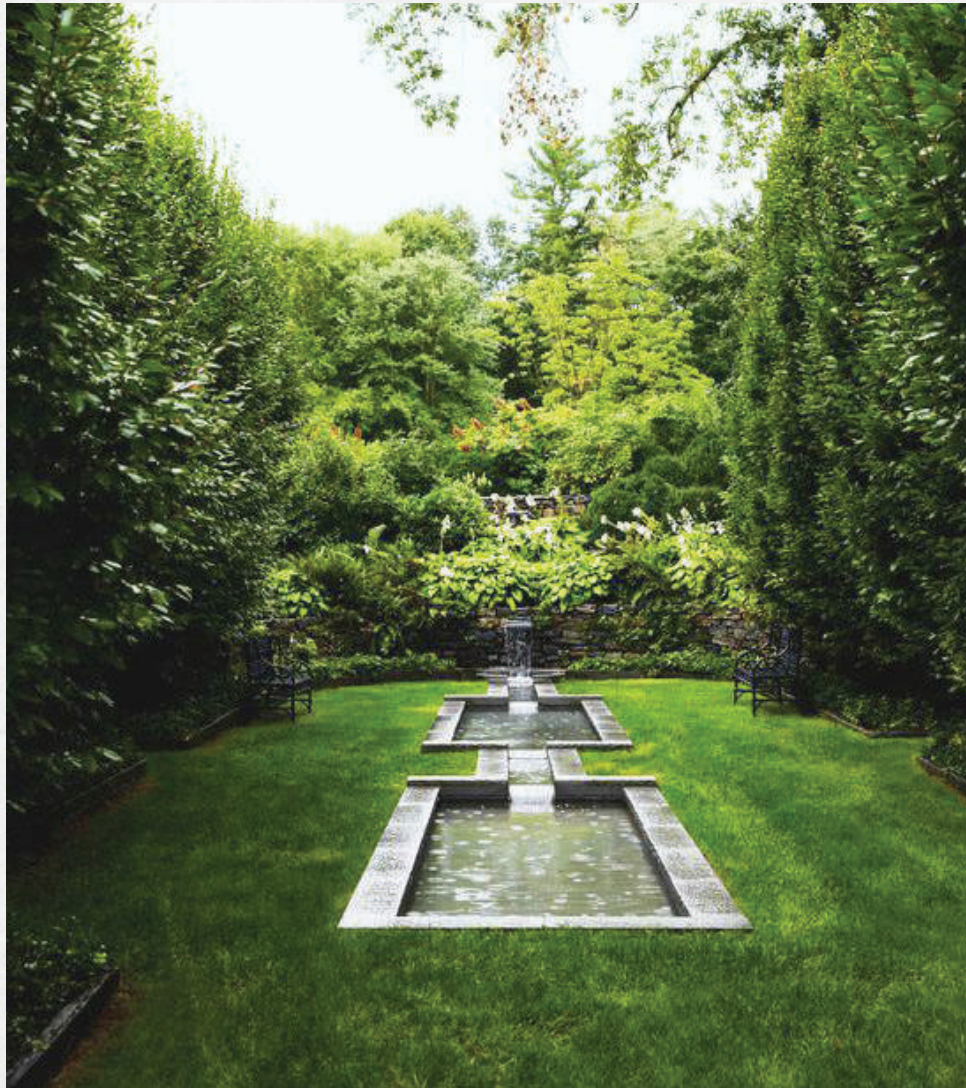
- Contemporary modular setup with high-quality branded fittings.
- Ample countertop space and integrated appliances.



AMENITIES

“At Badal Hills Signature Villas, each residence is equipped with exceptional features designed to enhance your living experience”

PRIVATE GARDENS



Enjoy your own serene outdoor space, perfect for relaxation and gatherings with family and friends.



PERSONAL TERRACES

Expansive terraces provide stunning views of the valley, ideal for outdoor dining, sunbathing, or simply unwinding amidst nature.

SWIMMING POOLS



Villas come with private swimming pools, offering a luxurious escape right in your backyard.

HOME AUTOMATION



Each villa is designed with provisions for advanced home automation systems, allowing you to control lighting, security, and climate with ease.

DINING AREA



LOUNGE AREA

A beautifully designed lounge area where residents can socialize, host events, and engage in community activities.



COMMUNITY AMENITIES

"Badal Hills fosters a vibrant community lifestyle with
an array of premium amenities for residents"



GYM

A fully equipped fitness center featuring modern workout equipment and space for fitness classes.

POOL AREA



A community swimming pool perfect for leisure and relaxation, surrounded by lush landscaping.



YOGA & MEDITATION CENTERS

Dedicated spaces designed for yoga and meditation, providing a tranquil environment to enhance well-being.

SPORTS FACILITIES



Cycling - Mountain biking



Jogging Tracks: Scenic jogging paths woven through the community's natural surroundings.



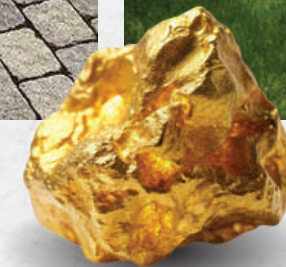
COMMON FIREPLACE

Versatile spaces available
for resident gatherings,
celebrations & activities.

PARKS



Well-maintained parks with walking trails, picnic areas, and green spaces for outdoor enjoyment.





SECURITY & SAFETY

Your safety is our top priority.

Badal Hills is equipped with:

24 / 7 SECURITY

Professional security personnel monitor the community round-the-clock.

CCTV SURVEILLANCE

Comprehensive CCTV coverage throughout common areas ensures peace of mind for all residents.

GATED COMMUNITY

Access is restricted to residents and their guests, providing an added layer of security.

VIDEO DOORBELLS

Each villa is equipped with video doorbells for enhanced security and convenience.

DISTANCE FROM NEARBY CITIES




 **LUDHIANA**
🕒 190 mins.
➔ 172 Kms

 **CHANDIGARH MOHALI
INTERNATIONAL AIRPORT**
🕒 90 mins.
➔ 60 Kms

 **CHANDIGARH**
🕒 80 mins.
➔ 50 Kms

 **DELHI**
🕒 343 mins.
➔ 292 Kms

 **DHARAMPUR**
🕒 10 mins.
➔ 3 Kms

 **SHIMLA**
🕒 146 mins.
➔ 78 Kms

"Envision your future at Badal Hills Signature Villas with this stunning artistic rendering, Showcasing the elegant architecture and serene environment of our villas."



For any further inquiries or to embark on your journey to luxurious living,
Please reach out: +91 95604-06133 | badalhillskasauli@gmail.com | www.badalhills.in

Designed by **Creative Monk**